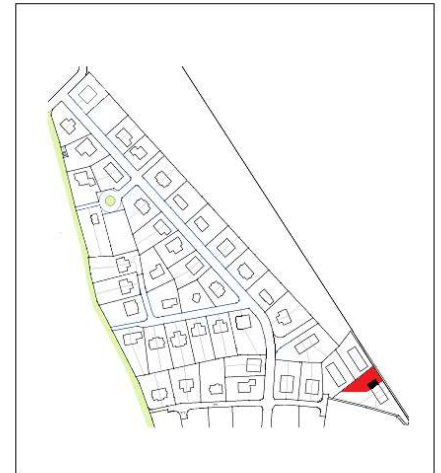
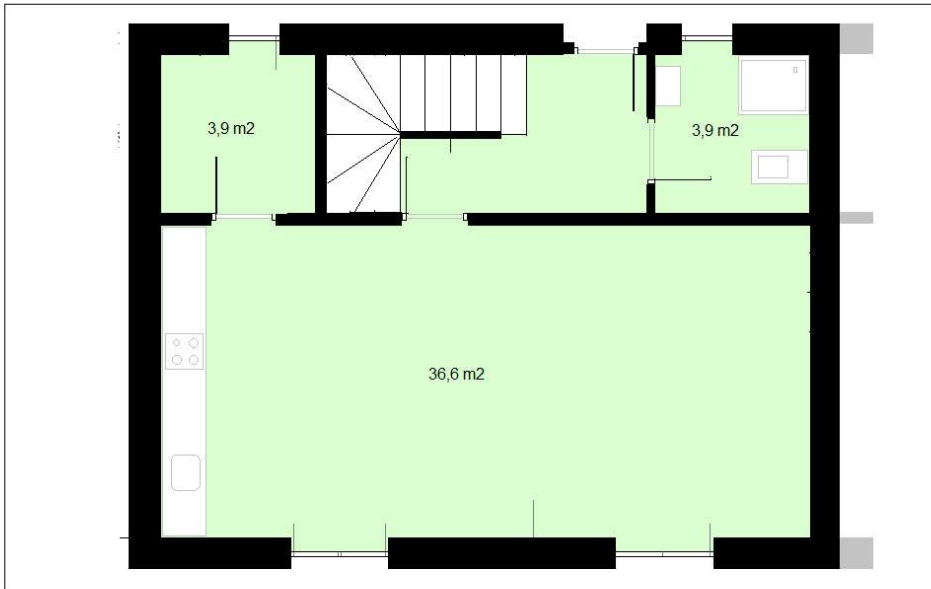
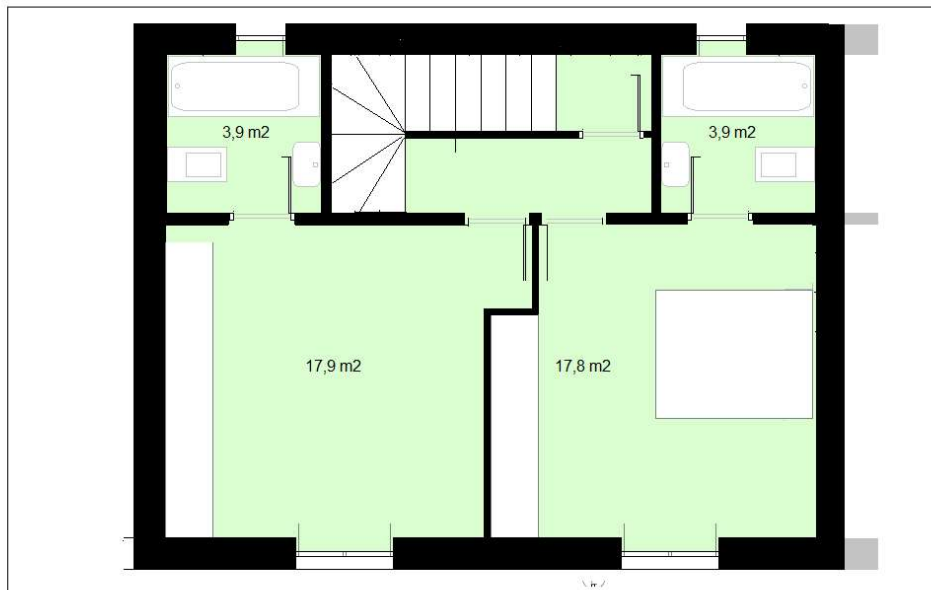


# Kvaton 1.BJ

plocha přízemí 52,8 m<sup>2</sup>



plocha patra 47,8 m<sup>2</sup>



Celková užitná plocha

145,7 m<sup>2</sup>

Celková podlahová plocha

147,0 m<sup>2</sup>

plocha podkroví 45,1 m<sup>2</sup>

